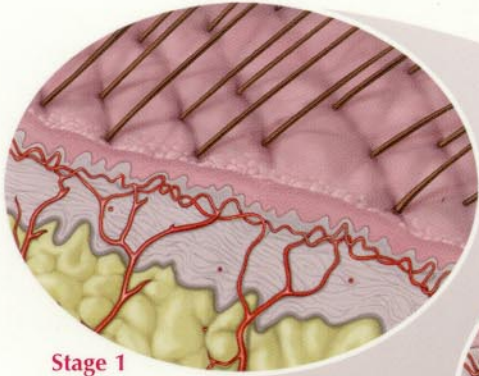




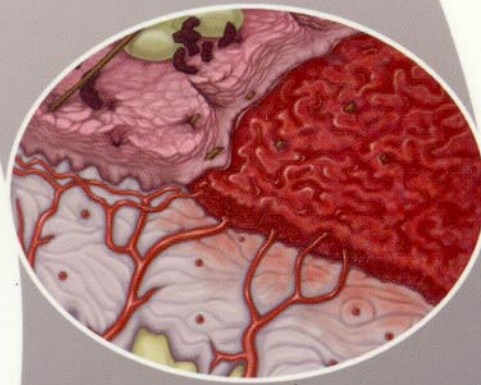
## FLEA ALLERGY DERMATITIS



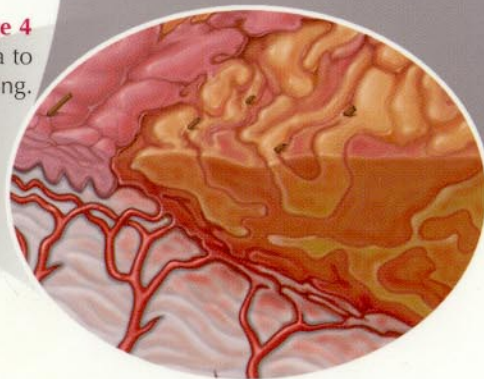
**Stage 1**  
Normal skin



**Stage 2**  
When a flea bites, it injects a small amount of saliva into the skin, causing an inflammatory reaction



**Stage 3**  
In animals that are allergic to the flea saliva, the reaction is more pronounced, causing intense itching. Scratching may cause increased inflammation and hair loss.



**Stage 4**  
Bacterial infection is a common sequela to skin trauma caused by scratching.

