

# HEARTWORMS—CANINE

*Dirofilaria immitis*

Length of Life Cycle = Approximately 6 Months



INTERNAL PARASITES

## CANINE HEARTWORM\*



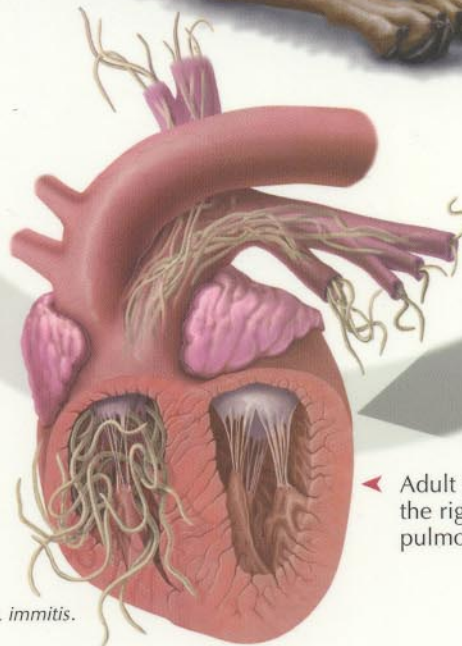
A mosquito becomes a heartworm intermediate host by ingesting microfilariae while biting an infected host.

A mosquito deposits heartworm larvae via saliva puddle into bloodstream.



Fertilized adult female heartworms release microfilariae into the blood.

Larvae develop in tissues and migrate to the heart where they mature to adult worms.



Adult heartworms live in the right ventricle and pulmonary artery.\*\*

\* Although rare, humans may develop pulmonary lesions if infected with *D. immitis*.

\*\* Adult worm is sometimes found at ectopic sites, eg, eye, skin, or body cavity.

HEARTWORMS  
HOOKWORMS

WHIPWORMS  
ROUNDWORMS

TAPEWORMS  
GIARDIA