



# ROUNDWORMS

*Toxocara canis*\*, *Toxocara cati*\*, and *Toxascaris leonina*\*



Length of Life Cycle = *T. canis*, approximately 4 to 5 Weeks; *T. cati* and *T. leonina*, ≈55 Days

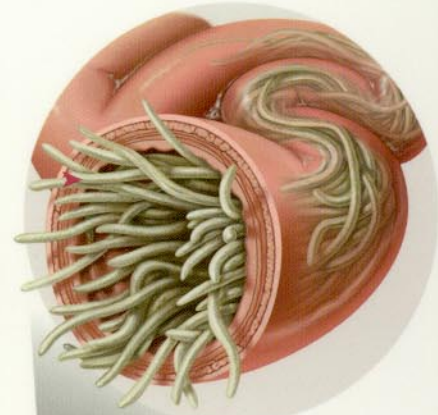
INTERNAL PARASITES

## ROUNDWORMS

HEARTWORMS  
HOOKWORMS

WHIPWORMS  
ROUNDWORMS

TAPEWORMS  
GIARDIA



Adult roundworms live in the small intestine.



Roundworms may be transmitted to young animals *in utero* or via milk (except *T. leonina*).

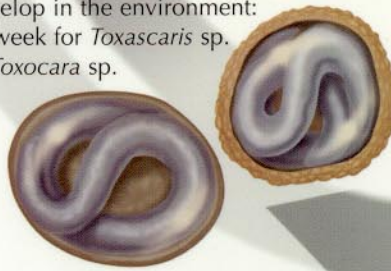
The hosts ingest the infective eggs or the transport host. Larvae of *T. canis* or *T. cati* may migrate extensively within the host's tissues.

Eggs are passed in the feces.



The transport hosts ingest infective eggs; larvae encyst in tissues.

Infective eggs develop in the environment: approximately 1 week for *Toxascaris* sp. and 4 weeks for *Toxocara* sp.



*Toxocara cati* egg



*Toxocara canis* egg



*Toxascaris leonina* egg

\* Larvae of both *T. canis* and *T. cati* may infect many organ systems in humans (visceral larva migrans); *Toxascaris leonina* is of no zoonotic significance.